

Possabilities - a place where anything is possible

Mission Statement

PossAbilities is an inspirational Social Enterprise co-owned by staff and service users. We deliver innovative, integrated and person centred services for people with learning disabilities, physical disabilities, mental health and other needs.

We support individuals to live the life they choose, tailoring our services to meet their needs, ensuring they achieve their aims and aspirations and lead full and independent lives.

PossAbilities is a place where individuals can experience new opportunities, develop friendships and learn new skills, in a creative and welcoming environment.

Our Services

Our services include day services, supported lodgings, respite services, dementia services, shared lives, supported employment and community outreach.

Our Staff

All our staff receive a comprehensive mandatory training package and we are committed to providing relevant training and development opportunities for all staff to ensure they have the necessary skills to deliver a quality service. Our staff establish familiar and positive relationships with service users and their families and have a breadth of experience in supporting older people suffering from a mental health condition.



Tel: 01706 692181

Email: enquiries@possabilities.org.uk

Web: www.possabilities.org.uk



PossAbilities Day Services

Get in touch

If you are interested in learning more about how our services may benefit you, please contact us. We are open 5 days a week, Monday - Friday, 9.00am to 5.00pm.



Cherwell Centre
Cherwell Avenue
Heywood, OL10 4SY



Tel: 01706 692181



Email: dayservices@possabilities.org.uk



Witley Road
19 Witley Road
OL16 5HE



Tel: 01706 488121



Email: dayservices@possabilities.org.uk



Pine Street
28 Pine Street
Heywood, OL10 1DT



Tel: 01706 488123



Email: dayservices@possabilities.org.uk



Victoria House
Victoria Street
Littleborough, OL15 8BA

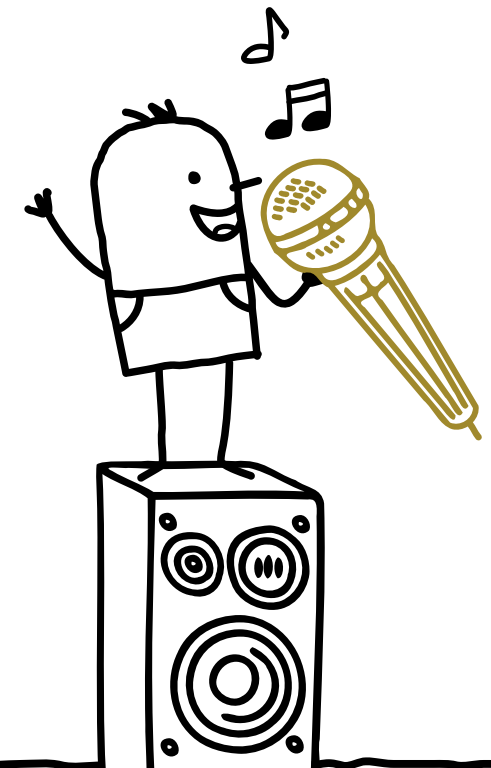


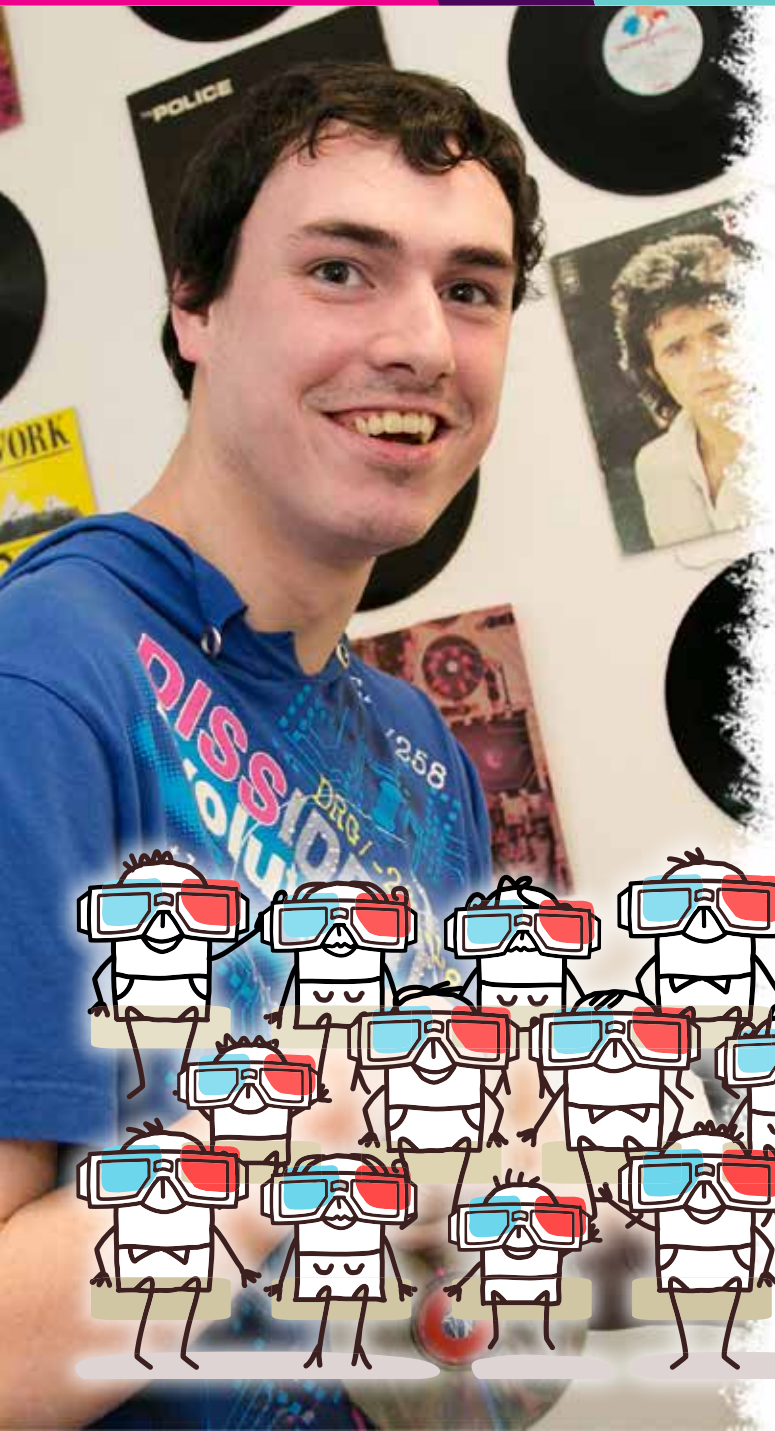
Tel: 01706 488122



Email: dayservices@possabilities.org.uk

Head Office, PossAbilities CIC, Cherwell Centre,
Cherwell Avenue, Heywood, OL10 4SY.





Day services for people with learning disabilities

We have a number of day centres where people can meet friends, join in activities and learn new skills in friendly surroundings. These include the Social Lounge in Heywood; The Cherwell Pet Farm where people can look after our selection of animals or work in our wild garden; Dale Gardening gives people the skills to tend gardens in local houses; and Fresh & Fruity develops skills in flower arranging.

It's not all work though. People who come to our day centres can perform in an annual show at The Middleton Arena in front of 500 people!

All in all, our day services are places to develop work skills and make connections whilst having a lot of fun.

We run day services in a number of locations:

- Cherwell Centre, Heywood
- Witley Road, Rochdale
- Pine Street, Heywood
- Victoria Street, Littleborough

What's on offer?

We provide a comprehensive programme of stimulating and engaging activities for our service users. We have an activities co-ordinator who ensures all our activities are engaging and diverse

so that service users feel empowered and have a sense of purpose whilst meeting agreed outcomes in line with their individual support plan. Our programme of activities encourages the growth of self-esteem, confidence, independence, skills development and social inclusion.

Activities include:

- Promoting healthy lifestyle/exercise
- Cook and eat/baking
- Arts and crafts
- Circus skills
- Music sessions
- Bowling
- Aromatherapy massage
- Bikes for all
- Exercises
- Light stimulation room
- Minibus outings
- Work placements
- Sports table tournaments
- Wii activities
- Cinema club
- Swimming
- Transport links for community access
- Pet Farm
- Fresh & Fruity
- Dale Gardening Project
- Annual Show

We offer

A safe and supportive environment where people are encouraged and supported to participate in activities which suit their needs and to meet their agreed outcomes as identified in their support plan. We have dedicated and professionally trained staff who care about, and are sensitive to, service users' needs. We are committed to working in partnership with the people we support, their families and carers, health professionals and other providers to develop effective, highly personalised services to suit individual needs.